



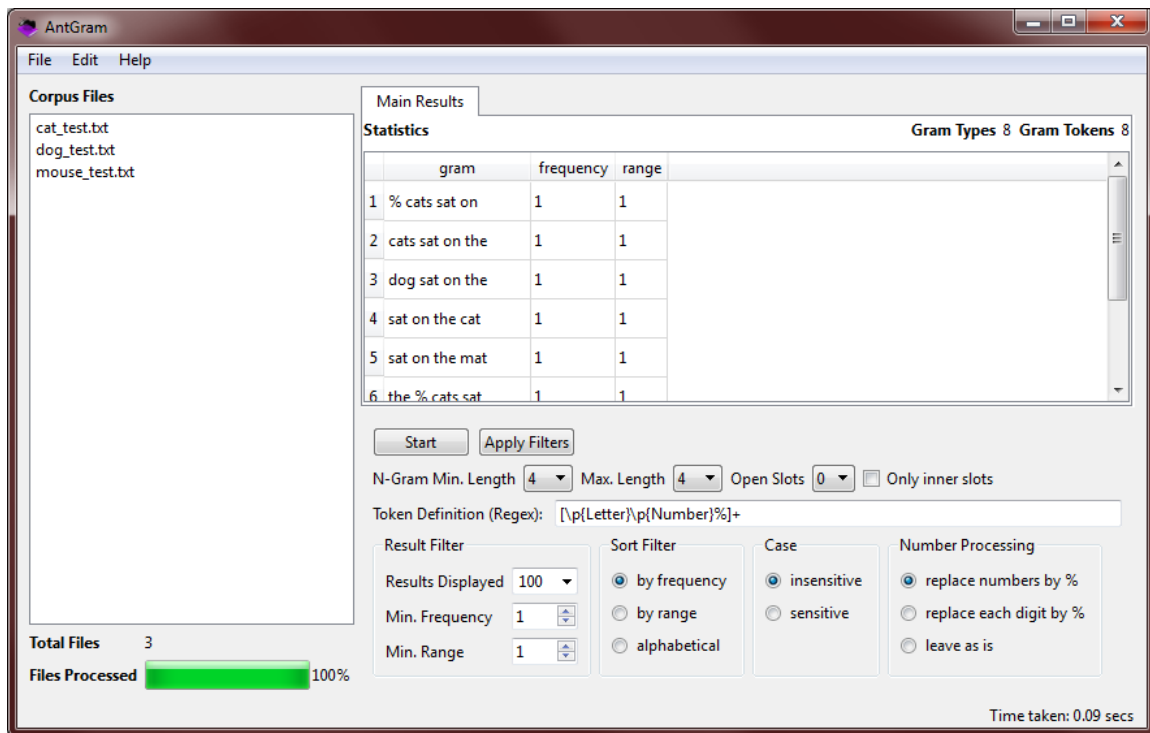
AntGram (Windows)

Build 1.0 (Released September 22, 2018)

Laurence Anthony, Ph.D.

Center for English Language Education in Science and Engineering, School of Science and Engineering, Waseda University, 3-4-1 Okubo, Shinjuku-ku, Tokyo 169-8555, Japan

Help file version: 100.



Introduction

AntGram is a freeware n-gram and phrase frame (p-frame) generation and profile tool that produces results based on a corpus of texts (UTF-8 encoded). *AntGram* runs on any computer running Microsoft Windows (tested on Win 7), Macintosh OS X (tested on OS X 10.9 Mavericks), and Linux (tested on Linux Mint 17) computers. It is developed in Python and Qt using the *PyInstaller* compiler to generate executables for the different operating systems.

Getting Started (No installation necessary)

Windows

On Windows systems, simply double click the *AntGram* icon to launch the program.

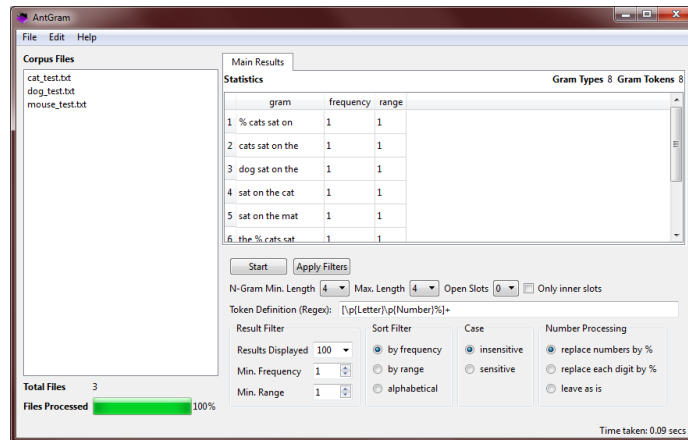
Macintosh OS X

On Macintosh systems, simply double click the *AntGram* zip file. The zip file will unzip the *AntGram* application. Then, you can drag the *AntGram* application to your application folder, your desktop, or anywhere else you like. Throw away the zip file when you are finished.

Linux

On Linux systems, set the permissions to run the executable, then double click the *AntGram* icon to launch the program.

Creating an n-gram list (or p-frame list)



Step 1: Select the corpus you want to use. You can do this in four ways:

- Click on the File->Open File(s) menu option and select the corpus you want to use;
- Click on the File->Open Dir menu option and select a directory of corpus files you want to use;
- Drag and drop corpus files directly onto the *AntGram* application.

Step 2: Select the parameters you want to use:

- n-gram Min. Length. The minimum length of n-grams, e.g. 2 => a b).
- n-gram Max. Length. The maximum length of n-grams, e.g. 4 => a b c d).
- Open Slots. The number of possible open slots in each n-gram, e.g. 2 => a # c #).
- Only inner slots. An option to restrict open slots to only appear inside the n-gram, e.g. YES => a # c d).

Step 3: Create a definition of each token of the n-gram (if required):

- Use the default setting (Unicode letters and numbers and the percentage sign) unless you have specific reason to change it. Change the default setting by specifying an appropriate Perl-based regular expression (PRE).

Step 4: Choose how to filter the results displayed on the screen (Result Filter).

- Results displayed. The number of results shown on the screen). Note that all results are generated by the program but only those set by the filters will be displayed. This feature allows huge numbers of n-gram/p-frames to be generated without using up all available memory when showing them.
- Min. Frequency. n-grams with a frequency less than this value will not be stored.
- Min. Range (n-grams with a range value less than this value will not be stored. The range value of an n-gram corresponds to the number of corpus files in the n-gram appears.

Step 5: Choose how to sort the results displayed on the screen (Sort Filter).

- by frequency. The sort order will be from the most frequent to the least frequent n-gram. Ties are sorted alphabetically.
- by range. The sort order will be from the n-gram with the highest range value to that with lowest range value frequent to the least frequent n-gram. Ties are sorted alphabetically.
- alphabetical. The sort order will alphabetical

Step 6: Choose how to treat letter case when processing the corpus files (Case)

- insensitive (e.g. The 100 CATS => the 100 cats)
- sensitive (e.g. The 100 CATS => The 100 CATS)

Step 7: Choose how to process numbers (Number Processing)

- replace numbers by % (e.g. the 100 cats => the % cats)
- replace each digit by % (e.g. the 100 cats => the %%% cats)
- leave as is (e.g. the 100 cats => the 100 cats)

Step 8: Click the "Start" button and wait for the results to be generated

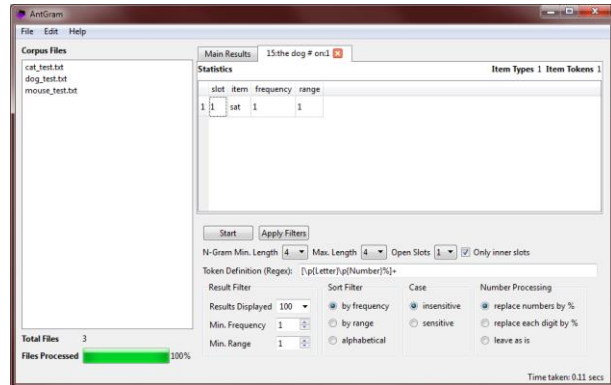
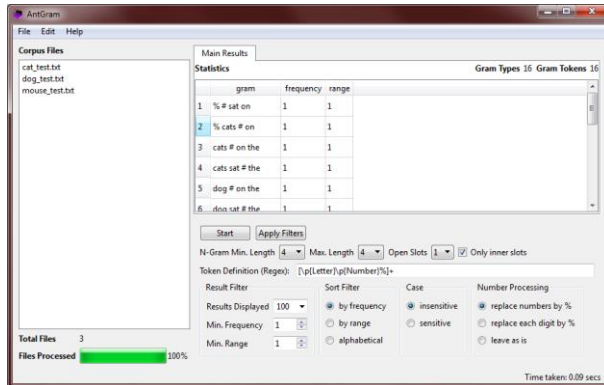
Creating a p-frame slot profile

Step 1: Create a p-frame list:

- a) Follow the steps above and create a p-frame list (making sure the Open Slots option is set to 1 or more)

Step 2: Create an p-frame slot profile

- a) Double click on one of the p-frame entries.
- b) Wait for AntGram to create one or more new tabs showing the items that fill the slot(s)



Saving results

Step 1: Select the tab of the results that you want to save

Step 2: Save the results via one of the File menu options:

- the File->Save Display Results As... or File->Save All Results As... (Results showing on the screen)
- the File->Save All Results As... or File->Save All Results As... (All results)

Additional Features

Selected files can be closed via the File->Close Selected Files menu option. All files can be closed via the File->Close All Files menu option.

Results can be selected, copied, and pasted as is standard on the operating system:

Windows: CTRL-A ⇔ Select All CTRL-C ⇔ Copy CTRL-V ⇔ Paste
Macintosh: CMD-A ⇔ Select All CMD -C ⇔ Copy CMD -V ⇔ Paste

NOTES

Comments/Suggestions/Bug Fixes

All new editions and bug fixes are listed in the revision history below. However, if you find a bug in the program, or have any suggestions for improving the program, please let me know and I will try to address the issues in a future version.

This software is available as 'freeware' (see Legal Matter below), but it is important for my funding to hear about any successes that people have with the software. Therefore, if you find the software useful, please send me an e-mail briefly describing how it is being used.

CITING/REFERENCING *AntGram*

Use the following method to cite/reference *AntGram* according to the APA style guide:

Anthony, L. (YEAR OF RELEASE). *AntGram* (Version VERSION NUMBER) [Computer Software]. Tokyo, Japan: Waseda University. Available from <http://www.antlab.sci.waseda.ac.jp/>

For example if you download *AntGram 1.0*, which was released in 2018, you would cite/reference it as follows: Anthony, L. (2018). *AntGram* (Version 1.0) [Computer Software]. Tokyo, Japan: Waseda University. Available from <http://www.antlab.sci.waseda.ac.jp/>

Note that the APA instructions are not entirely clear about citing software, and it is debatable whether or not the "Available from ..." statement is needed. See here for more details: <http://owl.english.purdue.edu/owl/resource/560/10/>

KNOWN ISSUES

None at present.

LICENSE for *AntGram*

AntGram 1.0 and any minor updates issued by AntLab Solutions (collectively 'the Software')

TERMS GOVERNING THE USE OF THE SOFTWARE

The Software is protected by copyright and must not be used, displayed, modified, adapted, distributed, transmitted, transferred or published or otherwise reproduced in any form by any means other than strictly in accordance with the terms set out below. By installing the Software, you agree to be bound by the terms of the license. This *AntGram* License ("License") is made between AntLab Solutions, Tokyo, Japan as licensor, and you, as licensee, as of the date of your use of the Software. The Software is in use on a computer when it is loaded into the RAM or installed into the permanent memory of that computer, e.g., a hard disk or other storage device.

1. License Material

These terms govern your use of the Software but not including subsequent versions (e.g. *AntGram 2.0*).

2. License Grant

AntLab Solutions grants to you a personal non-exclusive non-transferable license ('the License') to use the Software in the following specific contexts.

a) Non-Commercial (Freeware) Use:

You may use the software for non-profit purposes on more than one computer or on a network so long as you are the sole user of the Software. (A "network" is any combination of two or more computers that are electronically linked and capable of sharing the use of a single software program.) You are not permitted to sell, lease, distribute, transfer, sublicense, or otherwise dispose of the Software, in whole or in part, for any form of actual or potential commercial gain or consideration.

b) Commercial Evaluation (Trial) Use:

You may evaluate (trial) the software for commercial purposes for a period of no more than fourteen (14) days from the date of download on more than one computer or on a network so long as you are the sole user of the Software.

c) Commercial Use

When you pay the commercial license fee established by AntLab Solutions, you may use the software for non-profit or commercial purposes on more than one computer or on a network so long as you are the sole user of the Software. (A "network" is any combination of two or more computers that are electronically linked and

capable of sharing the use of a single software program.) You will obtain a separate license for each additional user of the Software (whether or not such users are connected on a network). You are not permitted to sell, lease, distribute, transfer, sublicense, or otherwise dispose of the Software, in whole or in part, for any form of actual or potential commercial gain or consideration.

3. Termination

You may terminate this License at any time by uninstalling the Software and deleting it. The License will also terminate if you breach any of the terms of the License.

4. Proprietary Rights

The Software is licensed, not sold, to you. AntLab Solutions reserves all rights not expressly granted to you. Ownership of the Software and its associated proprietary rights, including but not limited to patent and patent applications, are retained by AntLab Solutions. The Software is protected by the copyright laws of Japan and by international treaties. Therefore, you must comply with such laws and treaties in your use of the Software. You agree not to remove any of AntLab Solutions' copyright, trademarks, and other proprietary notices from the Software.

5. Distribution

Except as may be expressly allowed in Section 2, or as otherwise agreed to in a written agreement signed by both you and AntLab Solutions, you will not distribute the Software, either in whole or in part, in any form or medium.

6. Transfer and Use Restrictions

You may not sell, license, sub-license, lend, lease, rent, share, assign, transmit, telecommunicate, export, distribute or otherwise transfer the Software to others, except as expressly permitted in this License Agreement or in another agreement with AntLab Solutions. You may not modify, reverse engineer, decompile, decrypt, extract, or otherwise disassemble the Software.

7. Warranties

ANTLAB SOLUTIONS MAKES NO WARRANTIES WHATSOEVER REGARDING THE SOFTWARE AND IN PARTICULAR, DOES NOT WARRANT THAT THE SOFTWARE WILL FUNCTION IN ACCORDANCE WITH THE ACCOMPANYING DOCUMENTATION IN EVERY COMBINATION OF HARDWARE PLATFORM OR SOFTWARE ENVIRONMENT OR CONFIGURATION, OR BE COMPATIBLE WITH EVERY COMPUTER SYSTEM. IF THE SOFTWARE IS DEFECTIVE FOR ANY REASON, YOU WILL ASSUME THE ENTIRE COST OF ALL NECESSARY REPAIRS OR REPLACEMENTS.

8. Disclaimer

ANTLAB SOLUTIONS DOES NOT WARRANT THAT THE SOFTWARE OR SERVICE IS FREE FROM BUGS, DEFECTS, ERRORS OR OMISSIONS. THE SOFTWARE OR SERVICE IS PROVIDED ON AN "AS IS" BASIS AND ANTLAB SOLUTIONS MAKES NO OTHER WARRANTIES OR CONDITIONS, EXPRESS OR IMPLIED, WITH RESPECT TO THE SOFTWARE INCLUDING WITHOUT LIMITATION THE IMPLIED WARRANTIES OR CONDITIONS OF MERCHANTABILITY OR FITNESS FOR A PARTICULAR PURPOSE.

9. Limitation of Liability

ANTLAB SOLUTIONS WILL HAVE NO LIABILITY OR OBLIGATION FOR ANY DAMAGES OR REMEDIES, INCLUDING, WITHOUT LIMITATION, THE COST OF SUBSTITUTE GOODS, LOST DATA, LOST PROFITS, LOST REVENUES OR ANY OTHER DIRECT, INDIRECT, INCIDENTAL, SPECIAL, GENERAL, PUNITIVE OR CONSEQUENTIAL DAMAGES, ARISING OUT OF THIS LICENSE OR THE USE OR INABILITY TO USE THE SOFTWARE OR SERVICE. IN NO EVENT WILL ANTLAB SOLUTIONS'S TOTAL AGGREGATE LIABILITY (WHETHER IN CONTRACT (INCLUDING FUNDAMENTAL BREACH), WARRANTY, TORT (INCLUDING NEGLIGENCE), PRODUCT LIABILITY, INTELLECTUAL PROPERTY INFRINGEMENT OR OTHER LEGAL THEORY) WITH REGARD TO THE SOFTWARE AND/OR THIS LICENSE EXCEED

THE LICENSE FEE PAID BY YOU TO ANTLAB SOLUTIONS. FURTHER, ANTLAB SOLUTIONS WILL NOT BE LIABLE FOR ANY DELAY OR FAILURE TO PERFORM ITS OBLIGATIONS UNDER THIS LICENSE AS A RESULT OF ANY CAUSES OR CONDITIONS BEYOND ANTLAB SOLUTIONS' REASONABLE CONTROL

10. Jurisdiction

These terms will be governed by Japanese law and the Japanese courts shall have jurisdiction.

REVISION HISTORY

1.0 This is the first version of the program

Copyright: Laurence Anthony 2018